

# EASY-TO-USE INSTRUCTIONS

## IMPORTANT! PLEASE NOTE:

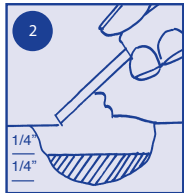
Always match color to putty when it is wet. Timbermate dries lighter than its original color when wet. It will return to its original color once the final topcoat is applied. Use a high content stainless steel or plastic putty knife. If the filler turns black, the putty knife is not high content stainless steel. The black discoloration will sand off. The density of some paint tint/colorants can vary. Some waterborne topcoats may cause the filler to bleach. Always test in a small area with desired tint and topcoat before using.



### PATCH

#### APPLY

If staining, use Timbermate natural/tint base, otherwise match the color of the filler (when wet) to the wood. Apply product directly to the floor prior to the last sanding.



#### FILL

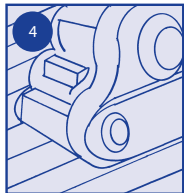
If the hole is greater than 1/4" in depth, layer application of product in 1/4" increments. Allow each layer to dry before adding another layer of material.



#### DRY\*

Let dry completely. Using a heat gun can decrease drying time.

Timbermate is properly dry if it sands to the consistency of a fine powder. If it clogs your sandpaper, it is not dry.

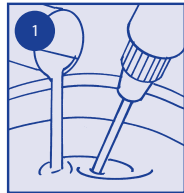
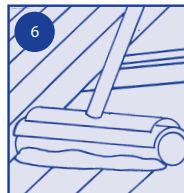
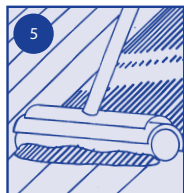


#### STAIN

Apply stain.

#### FINISH

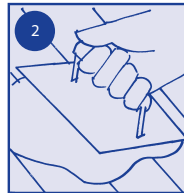
Apply final finish coat.



### TROWEL FILL

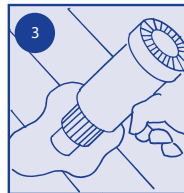
#### MIX

If staining, use Timbermate natural/tint base, otherwise match the color of the filler (when wet) to the wood. Mix in a tub with warm water (a mixer attached to a heavy-duty drill is ideal). Slowly pour the water in as you mix—usually about 15% by water weight. Mix until it has the consistency of toothpaste.



#### APPLY

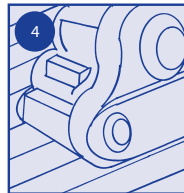
Apply product just before the final sand with a plastic trowel or a rubber float across the grain over the entire floor. Make sure the filler is forced into deep crevices. Do not apply too heavy; a small amount goes a long way. Remove all excess material. Return excess material to the container for future use.



#### DRY\*

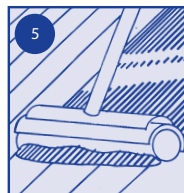
Let dry completely. Using a heat gun can decrease drying time.

Timbermate is properly dry if it sands to the consistency of a fine powder. If it clogs your sandpaper, it is not dry.



#### SAND

Final sand. Be sure to remove all dust and debris. Do not use a sandpaper grit coarser than 120.

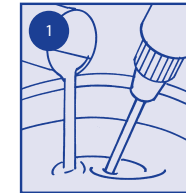
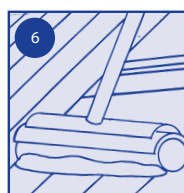


#### STAIN

Apply stain.

#### FINISH

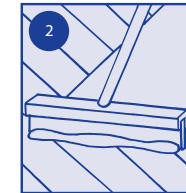
Apply final finish coat.



### GRAIN FILL

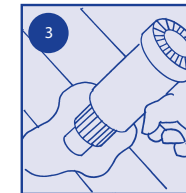
#### MIX

If staining, use Timbermate natural/tint base, otherwise match the color of the filler (when wet) to the wood. Mix in a tub with warm water (a mixer attached to a heavy-duty drill is ideal). Slowly pour the water in as you mix—it should have the consistency of thick paint. Allow mixture to dry to the consistency of toothpaste before sealing the tub.



#### APPLY

Just before the final hard plate or screening, apply by flooding the floor, and squeegee across the grain over the entire surface. Do not apply too heavy; a small amount goes a long way. Remove all excess material. Return excess material to the container for future use.



#### DRY\*

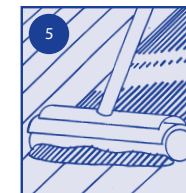
Let dry completely. Using a heat gun can decrease drying time.

Timbermate is properly dry if it sands to the consistency of a fine powder. If it clogs your sandpaper, it is not dry.



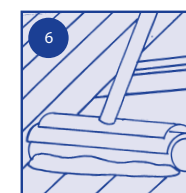
#### SAND

Final hard plate or screen and remove all dust and debris. Do not use a sandpaper grit coarser than 120.



#### STAIN & FINISH

Apply stain and final finish coat.



\* DRYING TIME – Approx. 30 minutes dependent upon the size of the fill. For large holes, fill holes 1/4" at a time. Allow to dry between each layer.